

# Griswold Capital Campaign begins with *you*



# Why a capital campaign? *you* are a Federally Qualified Health Center.

In FY 2007 grant funding represented 44.5% of total agency revenue and fee for service represented 49.2% of total agency revenue.

In FY 2016 (unaudited) grant funding represented 30.1% of total agency revenue and fee for service represented 65.7% of total agency revenue.

**HEALTH  
CARE**  
THAT BEGINS WITH  
*you*

 **UCFS**  
United Community & Family Services

# Why is UCFS building a health center in Griswold?

Because every member of our community deserves to have access to quality healthcare services!

## Need for expansion

- In February 2008 we opened our current office.
- Griswold is keeping pace as our second highest user of services-we have outgrown our current space.
- Griswold represents 30.3% of UCFS' overall clients and represents 38.7% of UCFS' low income clients.

**HEALTH  
CARE**  
THAT BEGINS WITH  
*you*

 **UCFS**  
United Community & Family Services

# What services will *you* provide at this new health center?

Medical

Behavioral Health Services

Dental -NEW

- Expansion will allow us to offer much needed dental services.
- UCFS served 4,908 Griswold service area clients with dental, leaving 18,463 low income residents unserved by an FQHC.
- Our Medicare population continues to grow (Medicare does not cover dental services). We are the only provider in town who provides a sliding fee for dental services.

HEALTH  
CARE  
THAT BEGINS WITH  
*you*

 **UCFS**  
United Community & Family Services

# Who will *you* serve at this new health center?

Everyone!

While Medicaid and uninsured patients continue to be the highest population served, our commercial and Medicare patients are on the rise.

**HEALTH  
CARE**  
THAT BEGINS WITH  
*you*

 **UCFS**  
United Community & Family Services

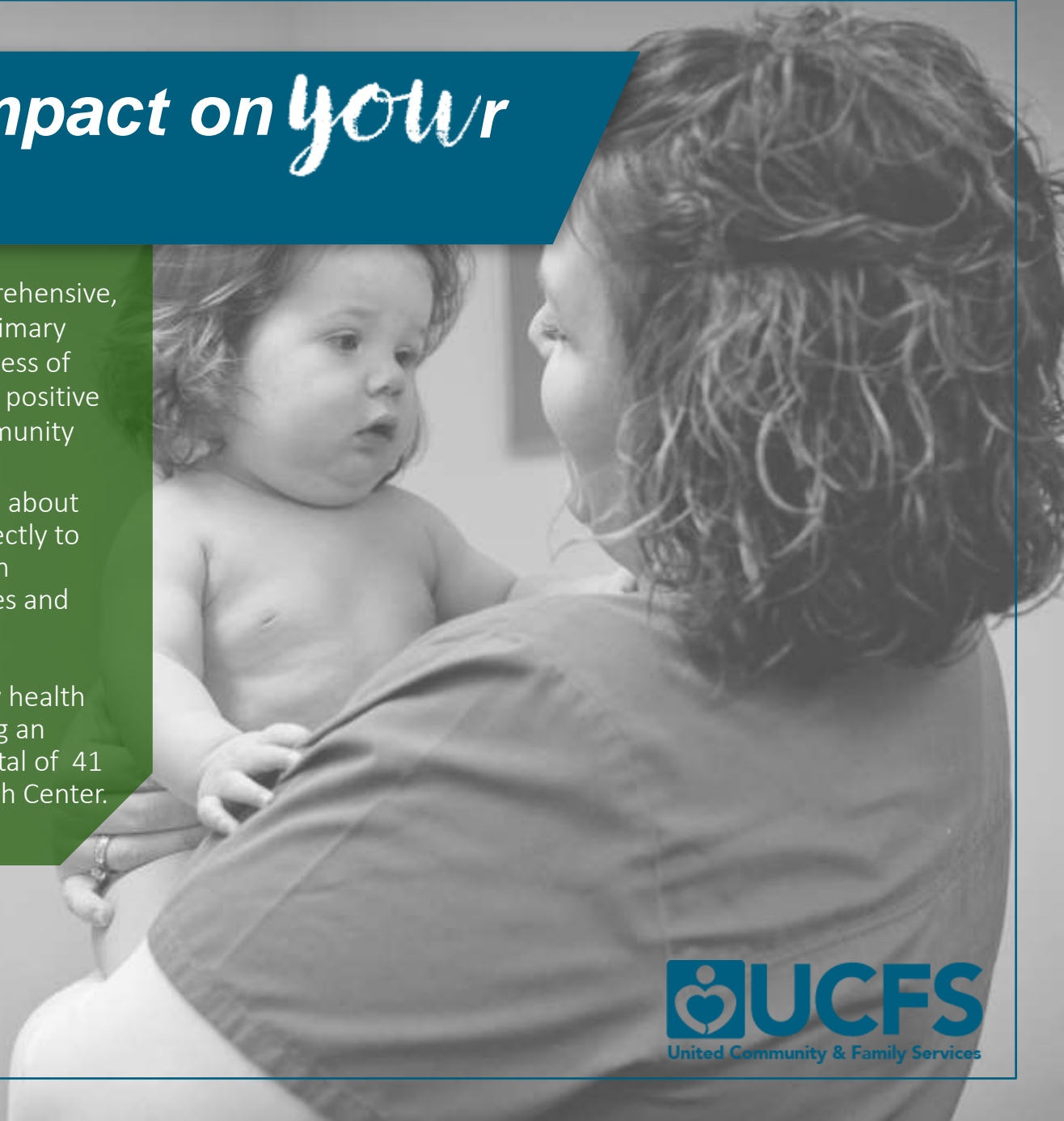
# Economic Impact on *your* Community

In addition to providing comprehensive, high quality preventive and primary health care to patients regardless of their ability to pay, UCFS has a positive economic impact on the community

- In 2015 UCFS contributed about \$44.1M directly and indirectly to the local economy through purchase of goods, services and more.
- Upon completion our new health center we anticipate hiring an additional 21 staff for a total of 41 staff at our Griswold Health Center.

**HEALTH  
CARE**  
THAT BEGINS WITH  
*you*

 **UCFS**  
United Community & Family Services



How much are *you* looking to raise from the community?

\$500,000

HEALTH  
CARE  
THAT BEGINS WITH  
*you*

 **UCFS**  
United Community & Family Services

# How much will the center cost?

This will be a phased 3-4 phased construction project. Estimated costs:

## Phase 1

12,544 sf building (2 floors)

First floor will be finished in this phase-

**\$4,091,084.32**

## Phase 2 (6,236 sf)

Fit out of 2<sup>nd</sup> floor-\$1,151,748.00

## Phase 3

4,000 sf 2 story addition-\$2,178,000.00

Total project            \$7,420,832.32

Secured Funding        \$3,900,000.00

Balance                    \$3,520,832.32



# Benefits of UCFS in *your* Community.

Community Health Centers provide high quality, cost effective, patient centered care to members of our community.

Recent studies show that, on average each patient receiving care at a health center saved the health care system 24% annually.

With 17,123 patients served by UCFS in 2015, the estimated annual savings is \$21.6 million at \$1,263 saved per patient.

**HEALTH  
CARE**  
THAT BEGINS WITH  
*you*

 **UCFS**  
United Community & Family Services

# How are *you* accepting and recognizing donations?

Main Entrance/Waiting Room- \$50,000 (1)  
Community Conference Room- \$35,000 (1)  
Healing Garden- \$25,000 (1)  
2<sup>nd</sup> Floor Waiting Room-\$20,000 (1)  
Medical Exam Room- \$15,000 (12)  
Dental Operatory- \$10,000 (4)  
BHS Office- \$7,000 (16)  
BHS Group Room-\$5,000 (3)  
Friend of UCFS-\$3,000 (8+)  
Healing Garden Brick- \$1,500 (13+)

**HEALTH  
CARE**  
THAT BEGINS WITH  
*you*

 **UCFS**  
United Community & Family Services



# When will *you* close the campaign for this health center?

Since this is a multi-phased project we plan to keep the capital campaign available to donors until we achieve our goal.



**HEALTH  
CARE**  
THAT BEGINS WITH  
*you*

 **UCFS**  
United Community & Family Services

*If you* have additional questions  
about this campaign please contact:

Pamela Allen Kinder  
VP of Marketing & Facilities  
UCFS  
47 Town Street, Norwich  
860-822-4146  
pkinder@ucfs.org

HEALTH  
CARE  
THAT BEGINS WITH  
*you*







UCFS  
 Griswold  
 226 East Main Street, Griswold, CT

**POA** Project One Architects  
 101 State Road,  
 Shelton, CT 06487  
 860.434.7337  
 www.projectonearchitects.com

# Thank you!



HEALTH  
CARE  
THAT BEGINS WITH  
*you*

 **UCFS**  
United Community & Family Services